

**Information on Software Installation for**

**AlphaVIEW / AlphaEXPERT  
GammaVIEW / GammaEXPERT**

**run under WIN 95 / WIN 98 /  
WINDOWS NT**

**Description**

**2/99**

## Summary

One ,frequently asked question' focusing on the software provided by Genitron Instruments is if we are or will be in future based on WINDOWS NT. This can fully be stated for the newly developed *SkyLINK* software *SkyVIEW/SkyEXPERT*.

Both existing *GammaVIEW/-EXPERT* or *AlphaVIEW/-EXPERT* are original DOS programmes. We plan to have a solution on the hardware level during 1999. An (intelligent) interface unit which enables the user to read out data by Alpha/GammaVIEW /-EXPERT and hand it over to any WINDOWS NT based system. This runs Alpha/GammaVIEW/ -EXPERT in a DOS window.

Available at the time being are the following possibilities:

### **Run the software under MS WINDOWS 95 or 98 by alternative modes:**

- Running Gamma/AlphaVIEW / -EXPERT for processing data under WINDOWS
- Communication or reading of AlphaGUARD / GammaTRACER data after rebooting in DOS mode

### **Run the software under WINDOWS NT:**

The PC must have available the ,dual boot' option. This option is obtained by installing both operating systems, MS-DOS and WINDOWS NT on the Computer. This configuration should be chosen when a PC is subject to new installation with WINDOWS NT.

**For details of installation please turn over.**

## 1.0 Program installation

The AlphaVIEW/-EXPERT resp. GammaVIEW/-EXPERT program can directly be started of a 'work copy' of the program diskette ('master' diskette).

- Note:**
- With the delivered 'master'diskette the write protection is activated. This write protection is a reliable wall against assaults of computer viruses and should therefore never be deleted of this diskette.
  - The 'work diskette' in contrary must be in a state where one can write on it when it is called up because Alpha/GammaVIEW/-EXPERT installs temporary files on its program drive.

For the effective use of the Alpha/GammaVIEW/-EXPERT program (fastest possible program run) its installation should be on the hard disk of the PC. Following installations under different operation systems have to be distinguished:

- Direct installation under MS-DOS
- installation under WIN 95/98
- installation under WINDOWS NT

- Note:**
- The following texts are a general information for installation. It has to be adapted according to particular hard- and software environment.

### 1.1 Installation under MS-DOS operating system

For the installation of Alpha/GammaVIEW/-EXPERT under MS-DOS the following steps have to be executed:

1. To set up a special DOS-hard disk directory, type:

**c:\md aview resp. c:\md aexpert** for (AlphaVIEW/EXPERT)

**c:\md gview resp. c:\md gexpert** for (GammaVIEW/EXPERT)

2. To copy all the supplied Alpha/GammaVIEW- resp. Alpha/GammaEXPERT-files (aview.exe resp. aexpert.exe / gview.exe resp. gexpert.exe, aview.cfg resp. aexpert.cfg /gview.cfg resp. gexpert.cfg as well as alphag.gen / gammair.gen and printere.driv) into this directory, type:

**cd aview resp. cd aexpert**  
**copy a:\*.\*** for AlphaVIEW/EXPERT

**cd gview resp. cd gexpert**  
**copy a:\*.\*** for GammaVIEW/EXPERT

- Note:**
- Before start of installation create a back-up copy of Alpha/GammaVIEW/-EXPERT program disk
  - Communication between PC and AlphaGUARD/GammaTRACER at first installation is carried out on serial PC-interface "COM 1"

- At first installation connect the mouse to COM 2 or BUS-mouse

To grant a program run without any faults following "minimum" contents are recommended for the system files CONFIG.SYS and AUTOEXEC.BAT of the applied PC. This recommendation should especially be noted if the PC disposes of only 4 MB RAM.

Taking up of further commands and/or instructions (f.ex.: network connection) needs to be tested by the PC-user. In case of problems please address to Genitron Instruments, Frankfurt, with a description of the problem and list of the contents of the *autoexec.bat* and *config.sys*.

#### - CONFIG.SYS

```
DEVICE=C:\DOS\HIMEM.SYS
DOS=HIGH,UMB
FILES=40
BUFFERS=10
DEVICEHIGH=Mouse-driver
```

#### Note:

- Instead of the input valid for German users "COUNTRY=049,437,C:\DOS\COUNTRY.SYS" the valid command is dependent on the present PC-keyboard and the country, the region resp. language the country figure and the code page number have to be modified (s. DOS-manual):  
f.ex.: - USA:           001,437,           resp. 001,850,  
          - GB:           047,437,           resp. 047,850,  
          - F            033,850,           resp. 033,437,
- Instead of the string "mouse driver" the exact file name of desired mouse driver including adjacent directory path is to be typed (f. Ex. C:\MOUSE\MOUSE.SYS)
- Calling up a mouse driver is effected either in the AUTOEXEC.BAT or in the CONFIG.SYS

#### - AUTOEXEC.BAT

```
@ECHO OFF
Prompt $p$g
PATH=C:\DOS;
LOADHIGH KEYB GR,, C:\DOS\KEYBOARD.SYS
LOADHIGH Mouse-driver
```

#### Note:

- Instead of the input valid for German users "LOADHIGH KEYB GR,, C:\DOS\KEYBOARD.SYS" the valid command is dependent on the present PC-keyboard and the country, the region resp. language the country figure and the code page number have to be modified (s. DOS-manual):  
f.ex.: - USA:           001,437,           resp. 001,850,  
          - GB:           047,437,           resp. 047,850,  
          - F            033,850,           resp. 033,437,
- Instead of the string "mouse driver" the exact file name of desired mouse driver including adjacent directory path is to be typed (f. Ex. C:\MOUSE\MOUSE GENHANCE PS2)
- Calling up a mouse driver is effected either in the AUTOEXEC.BAT or in the CONFIG.SYS

## 1.2 Installation under MS WINDOWS 95 operating system

The Alpha/GammaVIEW/-EXPERT program is not an original WINDOWS 95- resp. WINDOWS 3.1/3.11 application. Alpha/GammaVIEW/-EXPERT can be run under WIN 95 usually without any problem (incl. multitasking). Stored \*.DVD files can be loaded, all normal (Alpha/GammaVIEW) and EXPERT-functions work. All commands as printouts of graphs and tables, exporting data into ASCII formate are fully available.

However, depending on the configuration of the PC, problems may arise after starting the AlphaGUARD/GammaTRACER communication module. Its unrestricted use including the communication with AlphaGUARD/GammaTRACER (parametrization, transfer of measuring values and automatic test run) requires to change from WINDOWS to the primary DOS mode.

To allow effective work with Alpha/GammaVIEW resp. Alpha/GammaEXPERT we recommend two alternative ways for running the software:

- Under windows for regular Alpha/GammaVIEW resp. -EXPERT working
- Closing WIN 95 and rebooting under DOS for communication with AlphaGUARD/ GammaTRACER, reading out, configuration and settings by software etc.

For the installation of the Alpha/GammaVIEW resp. -EXPERT-program as a DOS-application under MS WINDOWS 95 the following steps have to be done:

1. Create a special folder with the name "AVIEW"/"GVIEW" resp. "AEXPERT" / "GEXPERT" in which the Alpha/GammaVIEW resp. -EXPERT-program files shall be filed later (see "Folder" in WINDOWS 95 manual or on-line help).
2. Copy all program files supplied on the Alpha/GammaVIEW resp. -EXPERT-disk (aview.exe resp. aexpert.exe / gview.exe resp. gexpert.exe, aview.cfg resp. aexpert.cfg / gview.cfg resp. gexpert.cfg as well as alpha.gen / gammair.gen and genitron.hcc and printerg.drv resp. printere.drv resp. printerf.drv) into the created folder (see "Windows-Explorer" in manual or on-line help of WINDOWS 95).

**Note:**

- After copying is finished please especially check if the data set "printerg.drv" resp. "printere.drv" resp. "printerf.drv" is in the respective file.
- On the program disk there is normally only one of the above mentioned printer driver, in a German version this is "printerg.drv", in an English version it is "printere.drv" and in a French version it is "printerf.drv"

3. Set up a so-called linkage by drawing the program file "aview.exe" resp. "aexpert.exe" out of the respective file to the desktop surface (mouse action with pressed down right mouse button).  
By this on the desktop surface a standard-MS-DOS-ICON is created with the subtitle "Shortcut to aview" resp. "Shortcut to aexpert.exe".
4. Repeat step 3. and create this way a second linkage. Change the titles of the linkages by clicking the letters below the resp. icon. Delete the entry and allocate following titles to the linkages (example): 1) "AVIEW under Win95" resp. "AEXPERT under Win95" / "GVIEW under Win95" resp. "GEXPERT under Win95" and 2) "AVIEW under DOS" resp. "AEXPERT under DOS" / "GVIEW under DOS" resp. "GEXPERT under DOS".

The first linkage (Alpha/GammaVIEW resp. -EXPERT under WIN95) is ready and serves as shortcut for starting the Alpha/GammaVIEW resp. -EXPERT program under Win95.

**The second linkage (to start the program under DOS) needs further modifications:**

5. By mouseclick with the right mouse key to the produced ICON named "AlphaVIEW under DOS" / "GammaVIEW under DOS" resp. "AlphaEXPERT under DOS" / "GammaEXPERT under DOS" next to this ICON a selection list is opened.
6. In the selection list the list item "Properties" is selected by mouse click with the left mouse key.
7. In the appearing window "Properties of AlphaVIEW under DOS" / "Properties of GammaVIEW under DOS" resp. "Properties of AlphaEXPERT" / "Properties of GammaEXPERT" the mask "Program" is selected by mouse click with the left mouse key. There the button "Advanced..." is pressed. The screen window "Advanced program settings" appears.
8. In the screen window "Advanced program settings" the setting "MS-DOS mode is activated by mouse click. By this the possibility of an optimal configuration of the PC for the execution of the Alpha/GammaVIEW/-EXPERT program arises.
9. For this activate "Specify a new MS-DOS configuration" then edit window "Config.sys for MS-DOS mode to:"

```
DEVICE=C:\WINDOWS\HIMEM.SYS
DOS=HIGH,UMB
COUNTRY=049,437,C:\WINDOWS\COMMAND\COUNTRY.SYS
FILES=40
BUFFERS=10
```

**Note:** - Instead of the inscription valid for German-speaking users "COUNTRY=049,437,C:\WINDOWS\COUNTRY.SYS" the country code and the code page number may have to be modified, dependent on the present PC-keyboard and the country, region resp. language (see WINDOWS95 manual or online help):

```
f.ex.: - USA:      001,437,      resp. 001,850,
        - GB:       047,437,      resp. 047,850,
        - F         033,850,      resp. 033,437,
```

10. Editing window of "autoexec.bat" to:

```
@ECHO OFF
Prompt $p$g
PATH=C:\WINDOWS;C:\WINDOWS\COMMAND; C:\GVIEW bzw. C:\GEXPERT
LOADHIGH KEYB GR,437,,C:\WINDOWS\COMMAND\KEYBOARD.SYS
LOADHIGH C:\WINDOWS\COMMAND\mouse driver
```

**Note:** - Instead of the inscription valid for German-speaking users "LOADHIGH KEYB GR,, C:\WINDOWS\KEYBOARD.SYS" the keyboard code may have to be modified, dependent on the present PC-keyboard and the country, region resp. language (see WINDOWS95 manual or online help):

```
f.ex.: - USA:      KEYB US,,
        - GB:       KEYB UK,,
```

- F                    KEYB FR,,

- Instead of the characters "*mouse driver*" the exact file name of the desired mouse driver including the adjacent directory path has to be registered (f. ex.: C:\WINDOWS\COMMAND\MOUSE.COM).

11. After editing is finished and the new contents of the "config.sys" and "autoexec.bat" controlled a mouse click to the "OK" button in the lower area of the screen window has to be effected. This action has to be repeated in the following screen window. With this the procedure of installation is finished.

**Note:**            Do not leave the screen windows by using their "closing field" because the effected changes will get lost.

### 1.3 Installation under MS WINDOWS NT operating system

***At first*** the DOS operating system must be installed in drive ,C'.

In a second partition of the hard disk f. ex. 'D' the NT operating system shall be installed. By this automatically a boot manager is created. Booting later on the user is asked to either run the system on DOS or NT.

Finally, based on this configuration the Alpha/GammaVIEW/EXPERT-software has to be installed on partition 'C' as described for the MS-DOS operating system.

**Note:**            Running MS-DOS operating system no other partitions than the DOS-drive i.e. 'C' can be recognised.

For using the communication modules of Alpha/GammaVIEW/EXPERT-software the PC has to be (re)booted in DOS mode (see next paragraph).

## 2 PROGRAM START

Transferring into the Alpha/GammaVIEW/-EXPERT program it has to be differed between the callup out of a MS-DOS environment and the start from a WINDOWS 95 desktop surface.

### 2.1 Start under MS-DOS operating system

Starting the program package "Alpha/GammaVIEW/-EXPERT" it is necessary to change into the directory "aview" / "gview" resp. "expert" and type the program name "aview" / "gview" resp. "expert" on the operating system level:

```
cd aview                resp. cd aexpert           for AlphaVIEW/EXPERT
aview <Enter-button>    resp. aexpert <Enter-button>
```

```
cd gview    resp. cd gexpert           for GammaVIEW/EXPERT
gview <Enter-button>    resp. gexpert <Enter-button>
```

**Note:** Before program start it is necessary to change into the directory in which Alpha/GammaVIEW/-EXPERT was installed or this register path is part of the PATH-instruction of the present AUTOEXEC.BAT of the user's- PC.

### 2.2 Start under MS WINDOWS 95 operating system

On the desktop are now two shortcuts for starting Alpha/GammaVIEW resp. -EXPERT programs. By selecting one of them the user is able to chose the mode (WIN95 resp. DOS) he wants to operate the program at any time he starts them:

1. Clicking the icon named (... under WIN 95) the program will run under windows. Multitasking is possible. **Attention:** The communication module may not work and can cause a system break down.
2. Clicking the icon named (... under DOS) windows is shut down, the PC is rebooted in DOS mode and Alpha/GammaVIEW resp. -EXPERT is started. After closing Alpha/GammaVIEW resp. -EXPERT WINDOWS is started again. In this mode a stable and unrestricted use of the communication module is granted.

### 2.3 Start under WINDOWS NT operating system

Given that the PC disposes of both operating systems, MS-DOS and WINDOWS NT the system can be booted in either modes.

For work like loading stored \*.DVD files, processing data, applying EXPERT-functions, exports and printouts, the Alpha/GammaVIEW/EXPERT software can be started in a DOS-window of the NT.

Problems arise by starting the communication modules for reading out data from

AlphaGUARD or GammaTRACER because WINDOWS NT cuts the ports for DOS based communication software. In this cases the PC has to be shut down and rebooted in MS-DOS.

## SCREEN DISPLAYS / TEST ROUTINES AFTER STARTING THE PROGRAM

During program start, following screen information is shortly displayed on DOS-level:

```
%PATH%
DOS/4GW Professional Protected Mode Run-time  Version 1.97
Copyright (c) Rational Systems, Inc. 1990-1994
```

After this message the program opens automatically the main screen of the Alpha/GammaVIEW/-EXPERT-program:

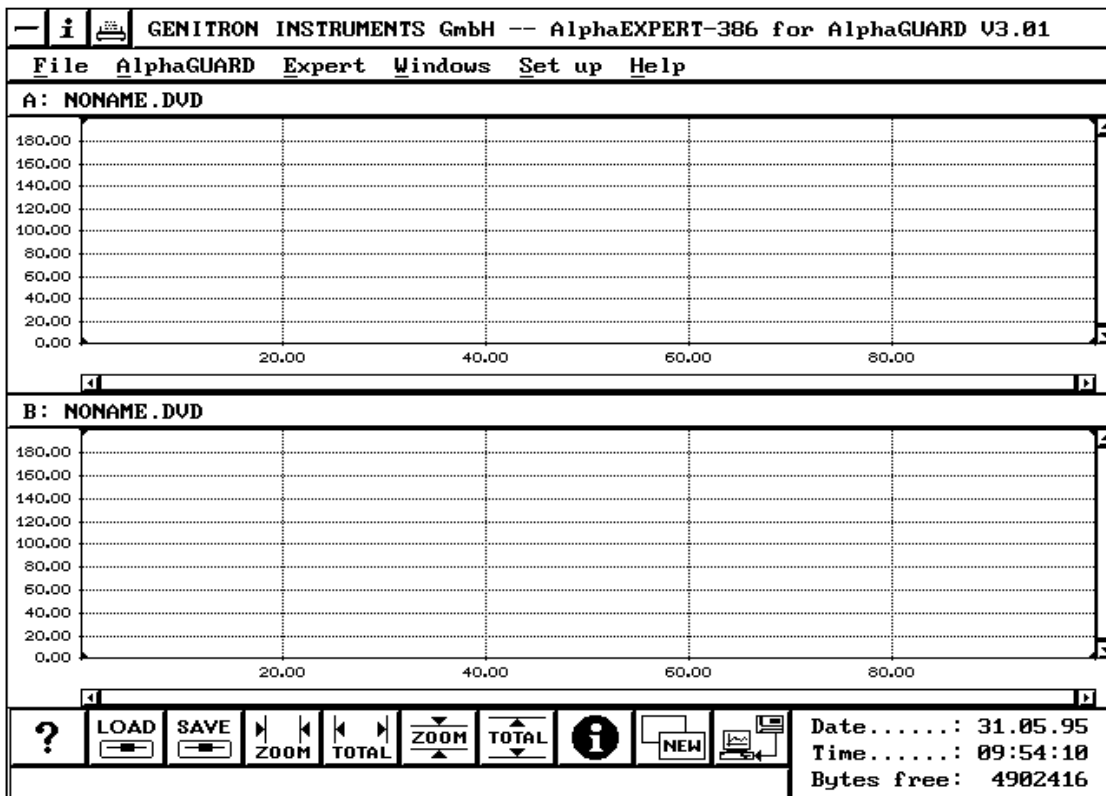


Figure 1: Mainscreen of AlphaVIEW/-EXPERT program

Immediately after the main screen appears the following status message is shortly overlaid on the screen (starting only with program versions Alpha/GammaVIEW 2.1x resp. Alpha/GammaEXPERT 3.1x):

```
Determination of checksum
>> Please wait <<
```

With this an automatic test run is effected which investigates the integrity of the Alpha/GammaVIEW/-EXPERT program. This procedure is based on a so-called checksum test. Thus it is assured that changes in the program code are recognized immediately and resulting wrong functions can be excluded.

If the following error message appears:

*"Error in checksum !  
Program will be quit!"*

then this message has to be explicitly confirmed. Afterwards a new installation of Alpha/GammaVIEW/-EXPERT program of the write protected master diskette is required.

### 2.1.1 Start Parameters

If a batch file should be executed at starting of Alpha/GammaVIEW/-EXPERT software the following instruction can be ajoined to the program name:

***aview/B<name>*** resp. ***aexpert/B<name>*** for AlphaVIEW/EXPERT  
***gview/B<name>*** resp. ***gexpert/B<name>*** for GammaVIEW/EXPERT

- Note:**
- The name of the batch file must follow directly the parameter B, e.g. . without a blank inbetween
  - Block letters/small letters are ignored
  - Batch files always end with the suffix ".dfb"

### 2.1.2 Configuration File

At program start the basic settings for the active session are taken of the configuration file "aview.cfg" / "gview.cfg" resp. "aexpert.cfg" / "gexpert.cfg". The following information are saved in the configuration file:

- Information on available file types
- Display level of the status line
- Color setting of the screen surface
- Mouse settings
- RS-232 port for AlphaGUARD / GammaTRACER communication
- Printer and printer installation
- File paths (DVD-, report-, export- and batch file path)
- Export- and import settings
- Configuration of external channels
- Number of presented coordinate windows